

Anti-His mIgG2a Antibody

Product Information

Product Name:	Anti-His mIgG2a Antibody
Storage temp.	Store at 4°C short term. Store at -80°C long term (5 Years), avoiding freeze/thaw cycles.
Product Specification:	GM-59493AB-10 GM-59493AB-100 GM-59493AB-1000

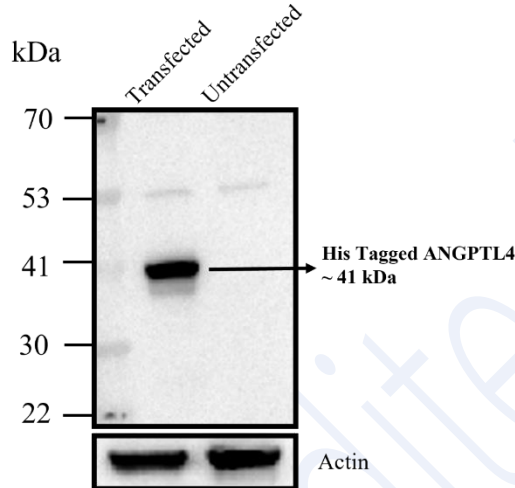
Antibody Information

Source/Isotype	Monoclonal Mouse IgG2a,kappa
Species Reactivity	All Species Expected.
Conjugate	Unconjugated
Other Names	6His tag; 6X His; His Tag; Histidine Tag
Application	WB; Bioactivity-ELISA
Background	The His tag is a small epitope tag consisting of between six to nine histidine residues, which is cloned into an expression vector upstream or downstream of a gene of interest. The His tag is commonly expressed as a tag at either N-or C-terminal regions of recombinant proteins to allow isolation or purification by immobilized metal affinity chromatography.
Formulation	Phosphate-buffered solution, 50% glycerinum, 0.05% Bacteriostatic preservative, pH 7.2.

Data Examples

WB

Western blot analysis was performed on untransfected 293 cells (Lane2) and by transfecting 293 cells with ANGPTL4 plasmid (Lane1), and Anti-His mIgG2a Antibody (Catalog # GM-59493AB) (diluted 1:1000, final concentration (1 μ g/ mL)) were used for overnight incubation at 4°C. HRP was coupled with secondary antibody and incubated at room temperature for 2 h before development.



Bioactivity-ELISA

Human ALPL Protein; His Tag (Catalog # GM-84418RP) was immobilized at 1 μ g/ml (100 μ L/well). Increasing concentrations of Anti-His mIgG2a Antibody (Catalog # GM-59493AB) were added.

Human ALPL Protein; His Tag ELISA
 0.1 μ g Human ALPL Protein; His Tag of per well

